

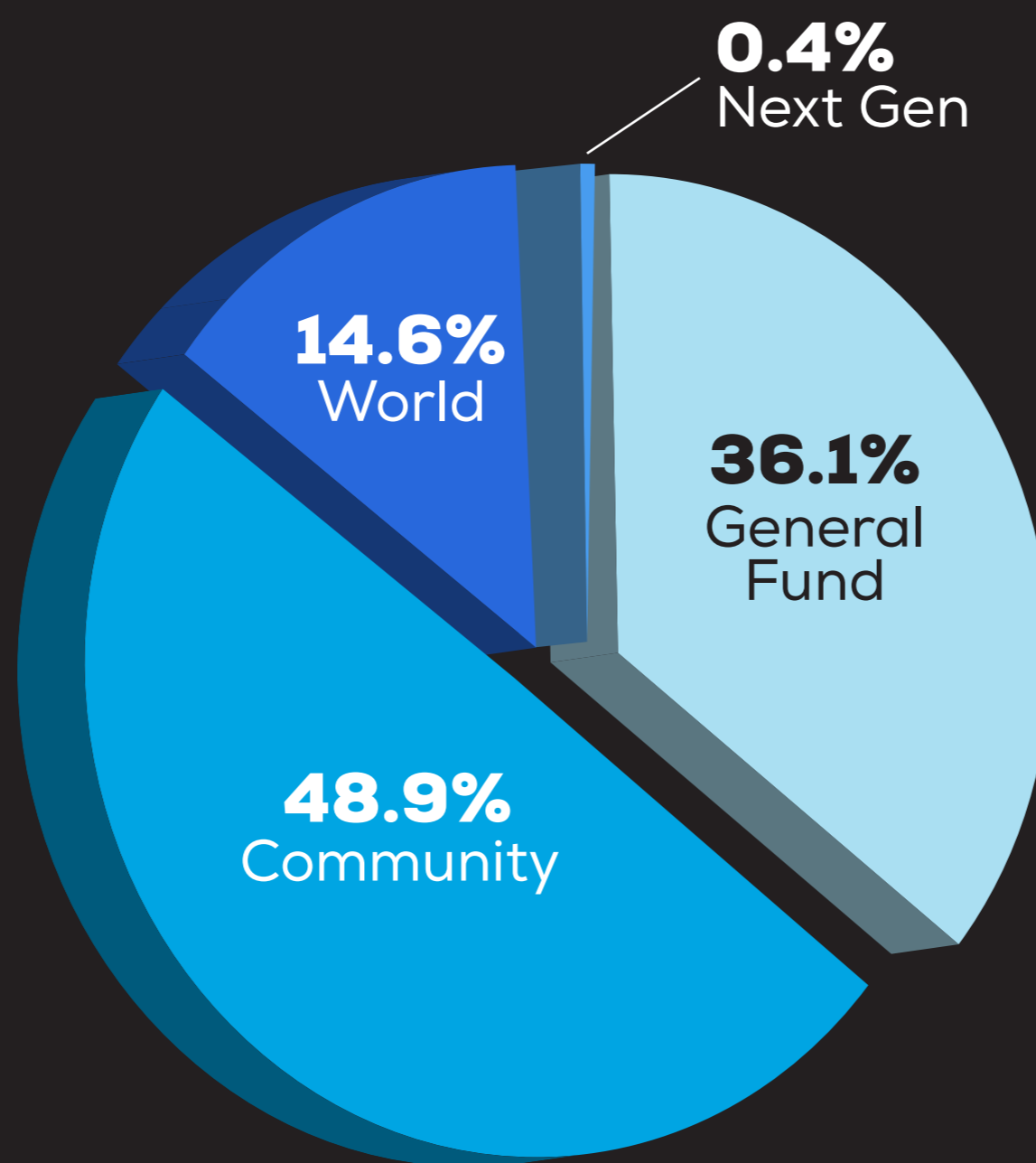


# Annual Financial Review

## 2020

## Kingdom Builder

General Fund	<b>\$1,292,805</b>
Community	<b>\$1,749,770</b>
Other	\$39,359
North River Expansion	\$1,301,175
Dream Center Expansion	\$409,236
World	<b>\$523,888</b>
Next Generation	<b>\$12,753</b>
<b>TOTAL</b>	<b>\$3,579,216</b>



## Financial Operations Summary

# 2020

**CONTRIBUTIONS REVENUE** **\$24,247,841**

Management and Support	<b>\$3,099,994</b>
Ministry Operations	<b>\$17,898,734</b>
Missions Expense	<b>\$2,301,432</b>
Capital Expenditures	<b>\$140,285</b>
Debt Retirement	<b>\$465,690</b>

## Balance Sheet Information Summary

**TOTAL ASSETS**  
**\$56,306,365**

Total Liabilities	<b>\$9,444,679</b>
Total Fund Balance	<b>\$46,861,686</b>
Total Liabilities + Fund Balance	<b>\$56,306,365</b>